

Eco-Alto Series UPS

600VA-2200VA

eco-Alto

FEATURES

- Ergonomic design
- Australian output plugs
- Wide input voltage range
- Boost and buck AVR
- Compatible with generators
- Audible alarms function
- Full-time surge protection
- Automatic diagnostic on startup
- Cold start function
- Intelligent battery management
- Automatic restart when mains returns
- Automatic battery charging in UPS off mode
- USB communication on 600VA
- USB / RS232 communications on 1000/1400/2200VA
- Supplied with intelligent monitoring and control software
- Protection against short circuit and low battery voltage



Camera Surveillance



Point of Sale



Telephone Systems



Computer



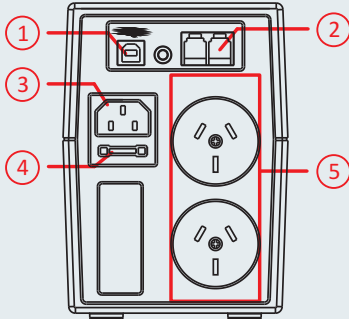
Peripherals



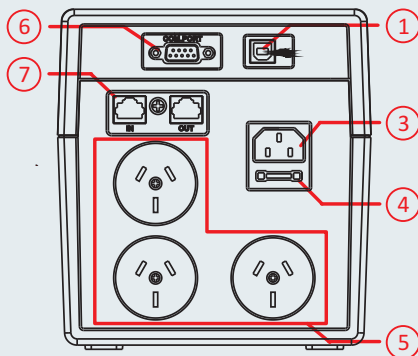
CE N12754

SPECIFICATIONS

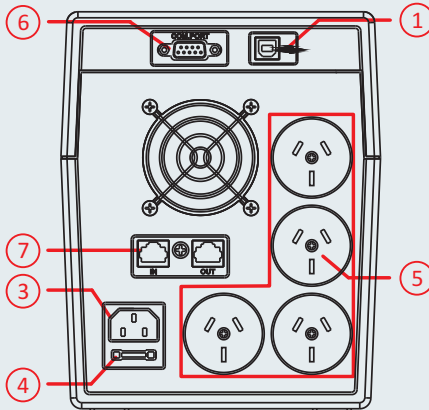
BACK PANELS



600VA



1000VA/1400VA



2200VA

- 1 - USB communication port
- 2 - RJ11 surge protection
- 3 - IEC input
- 4 - User replaceable fuse
- 5 - Output sockets
- 6 - RS232 communication port
- 7 - RJ45 surge protection

RUNTIME IN MINUTES

| Load VA/W | 100VA 60W | 200VA 120W | 400VA 240W | 500VA 300W | 600VA 360W | 800VA 480W | 1000VA 600W | 1200VA 720W | 1500VA 900W | 2000VA 1200W |
|---------------|--------------|---------------|---------------|---------------|---------------|---------------|----------------|----------------|----------------|-----------------|
| Eco-Alto 600 | 39 | 28 | 14 | 9 | 6 | | | | | |
| Eco-Alto 1000 | 78 | 56 | 24 | 21 | 14 | 9 | 6 | | | |
| Eco-Alto 1400 | 91 | 60 | 32 | 28 | 23 | 15 | 10 | 7 | | |
| Eco-Alto 2200 | 156 | 112 | 64 | 59 | 55 | 51 | 36 | 24 | 21 | 9 |

| Model | Eco-Alto 600 | Eco-Alto 1000 | Eco-Alto 1400 | Eco-Alto 2200 |
|---------------------------------|---|-----------------|---------------|---------------|
| Capacity | 600VA/360W | 1000VA/600W | 1400VA/840W | 2200VA/1320W |
| Input | | | | |
| Voltage | 230/240V | | | |
| AVR voltage range | 162V-290V | | | |
| Frequency range | 40Hz-70Hz | | | |
| Output | | | | |
| Voltage regulation | Batt. mode: 230V ± 10% | | | |
| Frequency | 50 Hz ± 1Hz | | | |
| Waveform | AC mode: sine wave; Battery mode: simulated sinewave | | | |
| Transfer time | Typical 2-6ms | | | |
| Battery | | | | |
| Type | Sealed lead acid, maintenance free | | | |
| Configuration | 1 x 12V/7AH | 2 x 12V/7AH | 2 x 12V/7.5AH | 2 x 12V/9AH |
| Charge current(Max) | 1.2A | 2A | 2A | 2A |
| Backup time | > 6 minutes load dependent | | | |
| Recharge | 6-8 hours to 90% capacity after complete discharge | | | |
| Function | | | | |
| Communication | USB | RS232 & USB | | |
| Surge protection | RJ11 | RJ45 | | |
| DC start | Yes | | | |
| Auto restart | Yes | | | |
| AVR | Yes | | | |
| Surge protection | 720 Joules / 30000A | | | |
| Input protection | EN50091-2 (C-Tick) | | | |
| Short circuit | User replaceable fuse | | | |
| LED indication & audible alarms | AC mode, battery charging, battery mode, battery low, over temperature, overload, short circuit | | | |
| Environment | | | | |
| Audible noise | < 40dB | | | |
| Temperature | 0 - 40 Degrees C (non-condensing) | | | |
| Humidity | 0 - 90% | | | |
| Physical | | | | |
| Australian outlets | 2 | 3 | 3 | 4 |
| Dimensions (WxDxH) | 298x101x142mm | 338x149.3x162mm | | 380x158x198mm |
| Net weight | 4.25Kg | 7.8Kg | 8Kg | 11.5Kg |